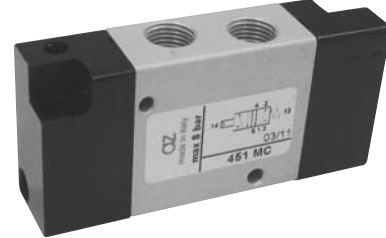


# valvole 16 mm ad azionamento pneumatico

*pneumatically piloted valves - 16 mm*



- Valvole a spola 5/2 con attacchi filettati M5 o G1/8" (scarichi M5)  
*5/2 spool valves with M5 or G1/8" threaded ports (M5 exhaust ports)*
- Spessore della valvola: 16 mm  
*Valve thickness: 16 mm*
- Montaggio in linea o su basi modulari (pag. 257-259)  
*Installation in-line or on multiple sub-bases (refer to pages 257-259)*
- Azionamento pneumatico monostabile o bistabile  
*Mono-stable or bi-stable pneumatic pilot*



## Materiali

Corpo: alluminio 11S

Molle: INOX

Guarnizioni: NBR

Spola: alluminio nichelato

Parti interne: ottone OT58

## Materials

Body: aluminium 11S

Springs: stainless steel

Seals: NBR

Spool: nickel plated aluminium

Internal parts: brass OT58

Diametro nominale <i>Nominal orifice</i>	4 mm	
Portata nominale a 6 bar, $\Delta p$ 1 bar <i>Nominal flow rate at 6 bar, <math>\Delta p</math> 1 bar</i>	M5: 320 NI/min G1/8": 350 NI/min	
Temperatura di esercizio <i>Temperature range</i>	max +60°C	
Pressione di esercizio <i>Working pressure</i>	-0.9 ... 10 bar -0.09 ... 1 MPa	
Pressione di azionamento <i>Actuating pressure</i>	monostabile <i>[mono-stable]</i>	bistabile <i>[bi-stable]</i>
	3 ... 10 bar 0.3 ... 1 MPa	2 ... 10 bar 0.2 ... 1 MPa
Fluido <i>Fluid</i>	Aria filtrata 50 $\mu$ con o senza lubrificazione <i>50<math>\mu</math> filtered, lubricated or non lubricated air</i>	

# valvole ad azionamento pneumatico

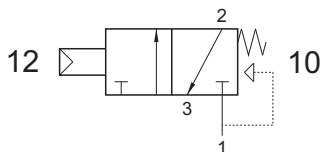
pneumatically piloted valves



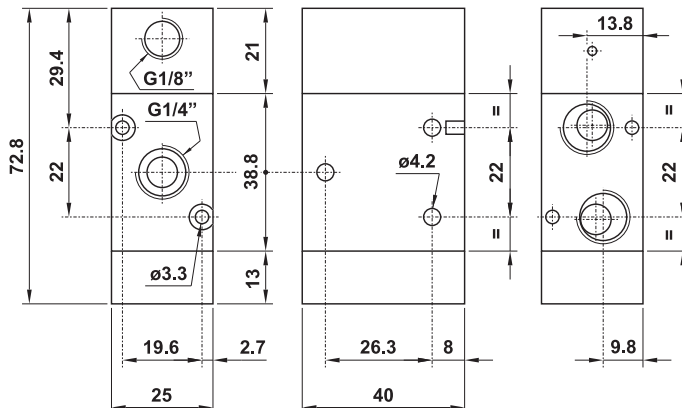
## 322 MC

3/2 1/4" NC comando pneumatico - ritorno a molla

3/2 1/4" NC pneumatic pilot - spring return



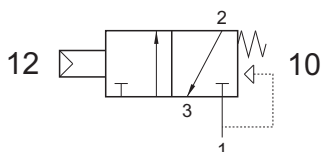
Non può essere utilizzata come valvola normalmente aperta.  
It cannot be used as normally open valve.



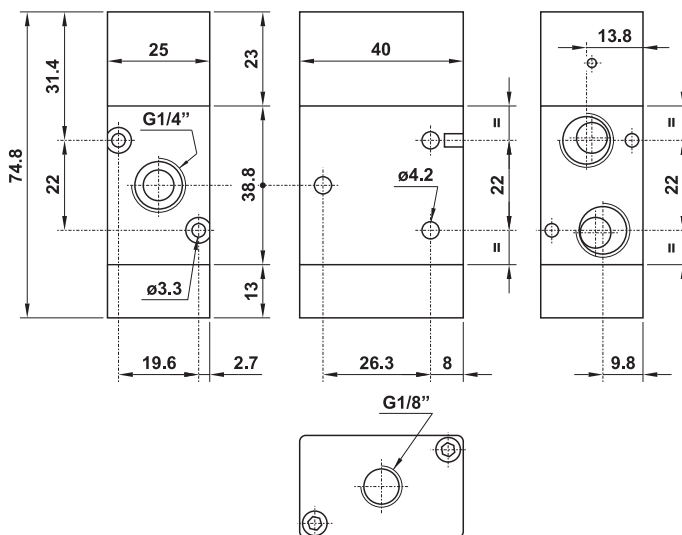
## 322 MC SUP

3/2 1/4" NC comando pneumatico attacco superiore - ritorno a molla

3/2 1/4" NC pneumatic pilot on the top - spring return



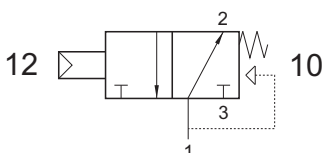
Non può essere utilizzata come valvola normalmente aperta.  
It cannot be used as normally open valve.



## 322 MCA

3/2 1/4" NA comando pneumatico - ritorno a molla

3/2 1/4" NO pneumatic pilot - spring return



Non può essere utilizzata come valvola normalmente chiusa.  
It cannot be used as normally closed valve.

