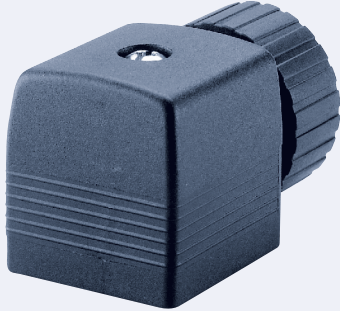


Cable Plug acc. to DIN EN 175301 - 803, Form A



- Complete program
- Contact form 18 mm
- Also available with LED indicator
- Optional 4 pin version for pressure switch or impulse valves respectively
- Versions with high-power, power reduction and inverter for impulse valves

Plug for the connection of electrical components according to DIN EN 175301 - 803 (previously DIN 43650, Form A).

Standard version without circuit, with LED, varistor, rectifier, pole protection- or/and free-wheeling diode.

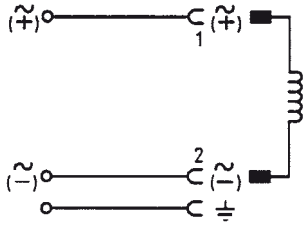
Variants with HL-circuit to increase performance of solenoid valves, LR-circuit to decrease power consumption and IN-circuit for control of impulse coils.

Technical data	
Body material	Polyamide, polycarbonate (version with LED)
Contact material	Brass, silver-plated
Max. continuous temperature	+ 90 °C (- 10 ... + 55 °C by version HL, LR and IN)
Cable diameter	6 - 7 mm (other diameter on request)
Cable outlet	Can be rotated through 4 × 90°
Contact distance	18 mm according to DIN EN 175301 - 803 (previously DIN 43650, Form A)
Functional display	LED, colour red (optional), yellow with version HL and LR
Electrical connection	Screw terminal Max. 1.5 mm ²
Nominal voltage	Depending on version
Contact resistance	5 mΩ (typ.)
Protection class	IP65
Number of terminals	
Standard	2 pins + protective earth conductor
Option	3 pins + protective earth conductor

Ordering chart

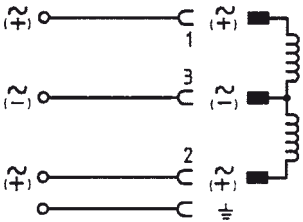
The delivery of a cable plug includes the flat seal and the steel fixing screw (thick-film-passivated); in the case of stainless steel valves we recommend a cable plug with a stainless steel screw (see ordering chart without circuit, or on request)

without circuit



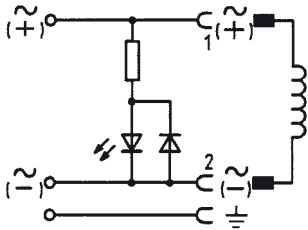
Voltage and version type	Current rating	Article no. without cable	Article no. 1 m cable	Article no. 3 m cable
0 to 250 V AC/DC with steel screw	max. 6 A	008376	783590	783573
0 to 250 V AC/DC with stainless steel screw	max. 6 A	132445	-	-

without circuit, 3-pins + protective earth conductor



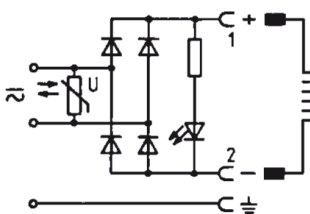
Voltage	Current rating	Article no. without cable	Article no. 1 m cable	Article no. 3 m cable
0 to 250 V AC/DC	max. 6 A	008526	-	-

with LED



Voltage	Current rating	Article no. without cable	Article no. 1 m cable	Article no. 3 m cable
12 to 24 V AC/DC	max. 6 A	008360	783574	783575
100 to 120 V AC/DC	max. 6 A	008361	-	-
200 to 240 V AC/DC	max. 6 A	008362	783576	783577

with rectifier, LED and varistor



Voltage	Current rating	Article no. without cable	Article no. 1 m cable	Article no. 3 m cable
12 to 24 V AC/DC	max. 1 A	008363	-	-
100 to 120 V AC/DC	max. 1 A	008365	-	-
200 to 240 V AC/DC	max. 1 A	008366	-	-