

# Model 888 Tail Gas Analyzer Class I, Division 2, GPS A, B, C, D

## User Manual



PN 883056902 REV. H



**Process Instruments**

Western Research  
455 Corporate Boulevard  
Newark, DE 19702

Item	Description	Part No.
PV1	Valve, Sample Inlet	271446001
DEM	Demister Assembly, Steam	883026903
	Demister Pad, Teflon	272177001
	Demister Pad, Stainless Steel	271653001
FV2	Valve, Sample Return	273383001
CELL	Cell Assembly, Low Range, 5"	883034901
	Cell Body, 5"	883077001
	Window, Fused Silica, 1.5"	200887001
	O-ring, Viton, 028	202813026
	Gasket, Teflon	880042001
ASP	Aspirator	407300902
FV3	Valve, Steam/Cell Isolation	883096001
CV1	Check Valve, Aspirator	203790001
CV2	Check Valve, Zero Flush, 200 micron orifice	883035001
O2	Orifice, Zero Flush, 200 micron	273454001
O1	Orifice, Pressure Transducer Purge, 50 micron	273455001
HE1	Heat Exchanger, Aspirator Drive, Alum Tube	N/A
HE2	Heat Exchanger, Zero Flush, Alum Tube	N/A
PCV1	Pressure Regulator, Manifold, 0-100 psig	301-0431
PCV2	Pressure Sensor, Aspirator, 0-30 psig	301-0430
PS1	Pressure Sensor, Manifold, 0-100 psig	403464902
PS2	Pressure Sensor, Aspirator, 0-30 psig	403464903
S1,S2,S3,	Solenoid Valves (Demister, Zero Flush, Steam Blowback/Cell Isolation,)	301-0424
PV1	Valve, Proportional Control, Aspirator	273408001
RTD1	RTD, Cell	883095001
RTD2	RTD, Demister	273402001
RTD3	RTD, Flange	883095002
PT	Pressure Transducer, 0-50 psia	273451001
GA1	Gauge Aspirator Pressure	251744000
PCV3	Pressure Regulator, Purge,0-60 psig	203188003
PI1	Guage, Purge, 0-60 psig	273472001

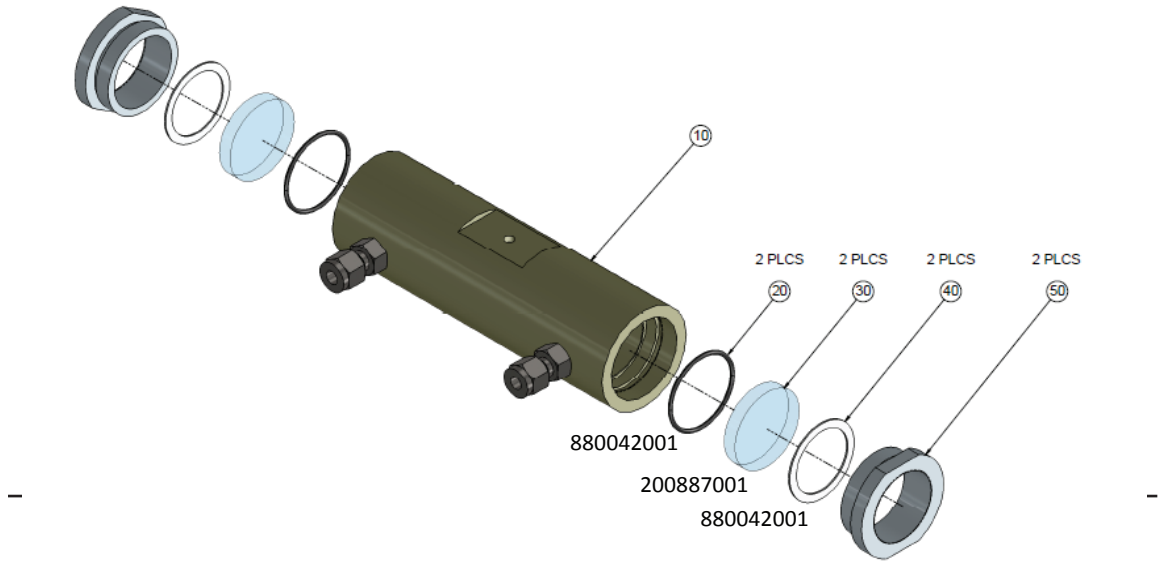
Table 1. Parts Legend - Refer to Figure 3-2.

## Part Numbers

Description	Ametek Part Number	Recommended Spare Part
Quartz Window, 1.5"	200887001	☐
Window Teflon Gasket	880042001	☐
Window O-Ring	202813026	☐
Mirror	273377002	☐
Mirror Teflon Gasket	883074002	☐
Lamp Assembly	403225901	☐
Demister Pad Assembly	883026904	☐
Fuse, Electronics, 1 Amp	301-0860	☐
Fuse, Heater, 4 Amp	301-0862	☐
Fuse, Main, 5 Amp	25780JE	☐
Clock Battery	301-0382	☐
Sensor Assembly	883047901	
Detector Assembly	883048901	
DC/DC Converter	883049901	
Amevision Circuit Assy.	8000-122-SE	
Lamp Power Supply	100-2061	
Keypad – SST	273398001	
Color Display	1000-617-JE	
Cell Assembly ( High Range)	883034902	
Cell Assembly ( Low Range)	883034901	
CONAX Gland Seal	200859002	☐
Aspirator	407300902	
Demister	883026901	
RTD, Sample Cell	883095001	
RTD, Flange	883095002	
RTD, Demister	273402001	
Pressure Transmitter	273415001	
Solid State Relay	273291001 (4)	
Proportional Valve	273408001	
Manifold Valve 3-way	301-0424	
24 Volt Power Supply	273524001	
Heater (120 V models)	883024901	
Heater( 230 V models)	883024902	

Cell Assembly (High Purge)	883034902	
Cell Assembly (Low Purge)	883034901	
Conax Gland Seal	200859002	■

## Sample Cell



**Figure 7-1 Sample Cell - 883034901 (Standard Range)  
- 883034902 (High Range)**