

EN - english

ES - español

FR - français

PT - português



Instructions for installation and operation
Instrucciones de instalación y de servicio
Instructions de montage et de service
Instruções de instalação e de serviço

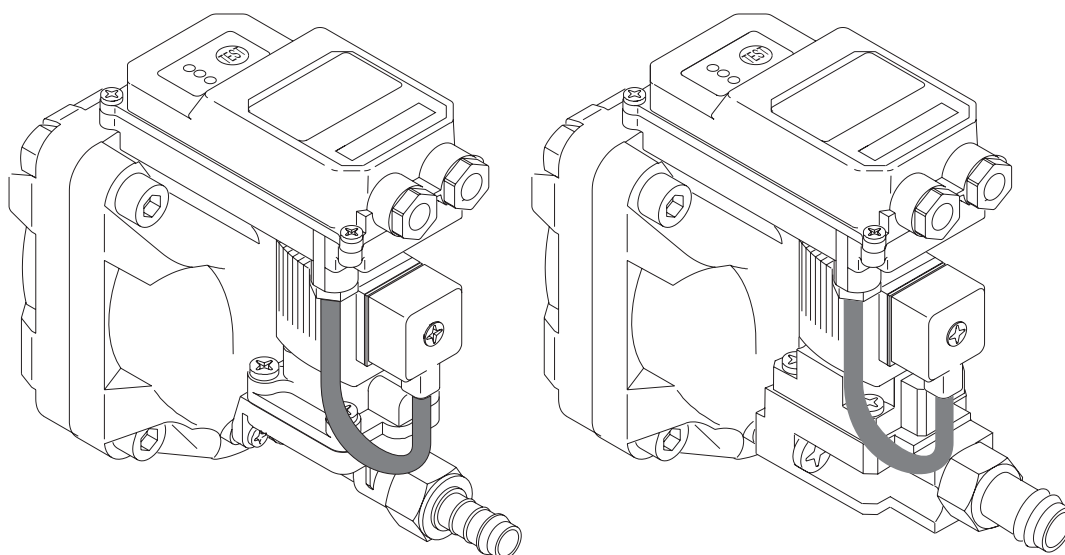
Condensate drain / Purgador de condensados / Purgeur de condensat /
Conductor de descarga de condensado

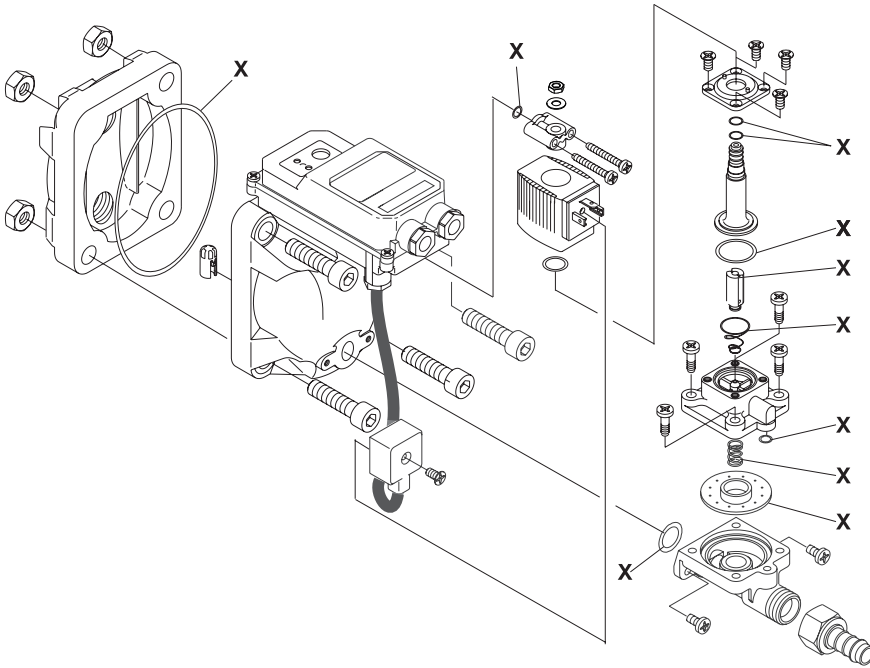
BEKOMAT® 13 (BM13)

BEKOMAT® 13 CO (BM13CO)

BEKOMAT® 13 CO PN25 (BM13COPN25)

BEKOMAT® 13 CO PN50 (BM13COPN50)



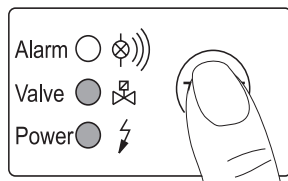


Maintenance recommendation:

- Housing and valve should be cleaned once a year.
- Replace wearing parts once a year.

Set of wearing parts (x)

BEKOMAT 13	2000067
BEKOMAT 13 CO	2000067
BEKOMAT 13 CO PN25	2000366
BEKOMAT 13 CO PN50	2000366



Functional test of BEKOMAT device:

- Briefly press test button 2 sec.
- Valve opens for condensate discharge.

Checking of alarm signal:

- Shut off condensate inflow.
- Press test button for at least 1 minute.
- Red LED flashes (after 1 minute).
- Alarm signal is being relayed.

español	français	português																								
<p><u>Recomendaciones para el mantenimiento:</u></p> <ul style="list-style-type: none"> • anualmente limpie la carcasa y la válvula • anualmente cambie los elementos de desgaste <p>Kit de piezas de desgaste (x)</p> <table border="0"> <tr> <td>BEKOMAT 13</td> <td>2000067</td> </tr> <tr> <td>BEKOMAT 13 CO</td> <td>2000067</td> </tr> <tr> <td>BEKOMAT 13 CO PN25</td> <td>2000366</td> </tr> <tr> <td>BEKOMAT 13 CO PN50</td> <td>2000366</td> </tr> </table>	BEKOMAT 13	2000067	BEKOMAT 13 CO	2000067	BEKOMAT 13 CO PN25	2000366	BEKOMAT 13 CO PN50	2000366	<p><u>Recommandations pour l'entretien :</u></p> <ul style="list-style-type: none"> • 1 fois par an, nettoyer le boîtier et la soupape • 1 fois par an, remplacer les pièces d'usure <p>Kit de pièces d'usure (x)</p> <table border="0"> <tr> <td>BEKOMAT 13</td> <td>2000067</td> </tr> <tr> <td>BEKOMAT 13 CO</td> <td>2000067</td> </tr> <tr> <td>BEKOMAT 13 CO PN25</td> <td>2000366</td> </tr> <tr> <td>BEKOMAT 13 CO PN50</td> <td>2000366</td> </tr> </table>	BEKOMAT 13	2000067	BEKOMAT 13 CO	2000067	BEKOMAT 13 CO PN25	2000366	BEKOMAT 13 CO PN50	2000366	<p><u>Recomendação de manutenção:</u></p> <ul style="list-style-type: none"> • Limpar todos os anos a caixa e a válvula • Trocar todos os anos as peças de desgaste <p>Jogo de peças de desgaste (x)</p> <table border="0"> <tr> <td>BEKOMAT 13</td> <td>2000067</td> </tr> <tr> <td>BEKOMAT 13 CO</td> <td>2000067</td> </tr> <tr> <td>BEKOMAT 13 CO PN25</td> <td>2000366</td> </tr> <tr> <td>BEKOMAT 13 CO PN50</td> <td>2000366</td> </tr> </table>	BEKOMAT 13	2000067	BEKOMAT 13 CO	2000067	BEKOMAT 13 CO PN25	2000366	BEKOMAT 13 CO PN50	2000366
BEKOMAT 13	2000067																									
BEKOMAT 13 CO	2000067																									
BEKOMAT 13 CO PN25	2000366																									
BEKOMAT 13 CO PN50	2000366																									
BEKOMAT 13	2000067																									
BEKOMAT 13 CO	2000067																									
BEKOMAT 13 CO PN25	2000366																									
BEKOMAT 13 CO PN50	2000366																									
BEKOMAT 13	2000067																									
BEKOMAT 13 CO	2000067																									
BEKOMAT 13 CO PN25	2000366																									
BEKOMAT 13 CO PN50	2000366																									
<p><u>Control del funcionamiento del BEKOMAT</u></p> <ul style="list-style-type: none"> • Accione el pulsador de TEST durante unos segundos. • La válvula abre para la evacuación del condensado. <p><u>Control del mensaje de alarma:</u></p> <ul style="list-style-type: none"> • cierre la entrada de los condensados • accione el pulsador de „TEST“ durante 1 minuto • el LED rojo parpadea (después de 1 min) • la señal de alarma se conecta 	<p><u>Test de fonctionnement du BEKOMAT</u></p> <ul style="list-style-type: none"> • Pression brève sur la touche Test 2 sec. • La soupape s'ouvre pour la purge <p><u>Vérification du signal d'alarme :</u></p> <ul style="list-style-type: none"> • Obturer l'arrivée de condensat • Presser la touche Test pendant 1 min. au moins • La LED rouge clignote (après 1 min.) • Le signal d'alarme est activé 	<p><u>Testar o funcionamento do BEKOMAT:</u></p> <ul style="list-style-type: none"> • Premir brevemente o botão de teste. • A válvula abre-se para escoamento do condensado. <p><u>Controlar o sinal de alarme:</u></p> <ul style="list-style-type: none"> • Fechar a afluência de condensado. • Premir pelo menos 1 minuto o botão de teste. • LED vermelho pisca (passado 1 min). • O sinal de alarme é ativado. 																								