

# Supplemental Motor Protection Devices Specifications

Bulletin Numbers 809S, 813S, 814S, 817S, 1409, 1410

Topic	Page
<a href="#">Bulletin 809S/813S/814S/817S</a>	<a href="#">2</a>
<a href="#">Product Line Overview</a>	<a href="#">2</a>
<a href="#">Cat. No. Explanation</a>	<a href="#">3</a>
<a href="#">Specifications</a>	<a href="#">4</a>
<a href="#">Standards Compliance and Certifications</a>	<a href="#">7</a>
<a href="#">Function and Wiring Diagrams</a>	<a href="#">8</a>
<a href="#">Approximate Dimensions</a>	<a href="#">14</a>
<a href="#">Bulletin 1409 Arcing Ground Fault Detection System</a>	<a href="#">15</a>
<a href="#">Specifications</a>	<a href="#">15</a>
<a href="#">Standards Compliance and Certifications</a>	<a href="#">15</a>
<a href="#">Typical Wiring Diagrams</a>	<a href="#">16</a>
<a href="#">Approximate Dimensions</a>	<a href="#">17</a>
<a href="#">Bulletin 1410 Motor Winding Heater</a>	<a href="#">18</a>
<a href="#">Specifications</a>	<a href="#">18</a>
<a href="#">Standards Compliance and Certifications</a>	<a href="#">18</a>
<a href="#">Approximate Dimensions</a>	<a href="#">18</a>

## Additional Resources

These documents contain additional information concerning related products from Rockwell Automation.

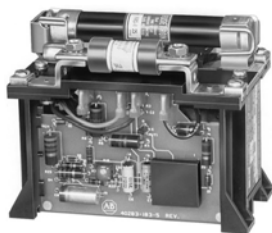
Resource	Description
Industrial Automation Wiring and Grounding Guidelines, publication <a href="#">1770-4.1</a>	Provides general guidelines for installing a Rockwell Automation industrial system.
Product Certifications website, <a href="http://www.ab.com">http://www.ab.com</a>	Provides declarations of conformity, certificates, and other certification details.

You can view or download publications at <http://www.rockwellautomation.com/literature/>. To order paper copies of technical documentation, contact your local Allen-Bradley distributor or Rockwell Automation sales representative.



# Bulletin 1410 Motor Winding Heater

## Supplemental Motor Protection Devices Specifications



Motor Winding Heater

Bulletin 1410 Motor Winding Heater is intended for use with 3-phase AC motors to guard against damage caused by condensation build-up on motor windings, which can occur in high-humidity environments during motor off times. **This device is not intended to be used to dry out damp motors.**

Bulletin 1410 Motor Winding Heater is designed for used with 3-phase AC squirrel-cage motors controlled by automatic full-voltage starters. For applications involving reduced-voltage starters, multi-speed starters, synchronous motors, or the used of power factor correction capacitors, consult your local Rockwell Automation sales office or Allen-Bradley distributor.

## Specifications

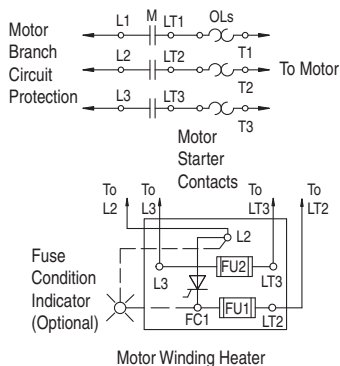
<b>Output Voltage Regulation</b>	Voltage applied to motor winding will vary $\pm 5\%$ maximum for line voltage variations of $+10\%$ , $-15\%$ .
<b>Ambient Temperature Range</b>	Operating, $0 \dots 50^\circ\text{C}$ ( $32 \dots 122^\circ\text{F}$ ) Storage, $-25 \dots +85^\circ\text{C}$ ( $-13 \dots +184^\circ\text{F}$ )
<b>Additional SCR Protection</b>	Metal oxide varistor protects against voltage surges. RC snubber circuit limits rate of change of circuit voltage.
<b>True RMS Output Current</b>	Approximately 15% of full load current.
<b>Power Delivered to the Motor</b>	Approximately 1...3 W/Hp.

## Standards Compliance and Certifications

Standards Compliance	Certifications
CSA C22.2, No. 144	CSA Certified (LR1234)
UL 508	UL Listed (File E56639, Guide NMTR)

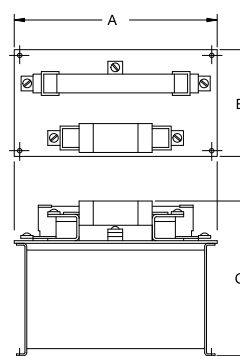
## Connection Diagram

See Applicable Codes and Laws.



## Approximate Dimensions

Dimensions are shown in millimeters (inches). Dimensions are not intended to be used for manufacturing purposes.



Cat. No.	A	B	C
1410-E0A47 1410-E0B50 1410-E0C50	146.1 (5-3/4)	88.9 (3-1/2)	114.3 (4-1/2)
1410-FOA50 1410-FOB54 1410-FOC54	204.8 (8-1/16)	108 (4-1/4)	177.8 (7)
1410-G0A54 1410-G0B59 1410-G0C59	238.1 (9-3/8)	146.1 (5-3/4)	206.4 (8-1/8)
1410-H0A57 1410-H0B62 1410-H0C62	279.4 (11)	244.5 (9-5/8)	207.2 (8-5/32)