

Vacuum Contactor and Starter Specifications

Bulletin Numbers 1102C, 1104C, 1109

Topic	Page
Specifications	2
1102C Approximate Dimensions	3...4
1104C Approximate Dimensions	5
1109 Approximate Dimensions	6...11

Additional Resources

These documents contain additional information concerning related products from Rockwell Automation.

Resource	Description
Industrial Automation Wiring and Grounding Guidelines, publication 1770-4.1	Provides general guidelines for installing a Rockwell Automation industrial system.
Product Certifications website, http://www.ab.com	Provides declarations of conformity, certificates, and other certification details.

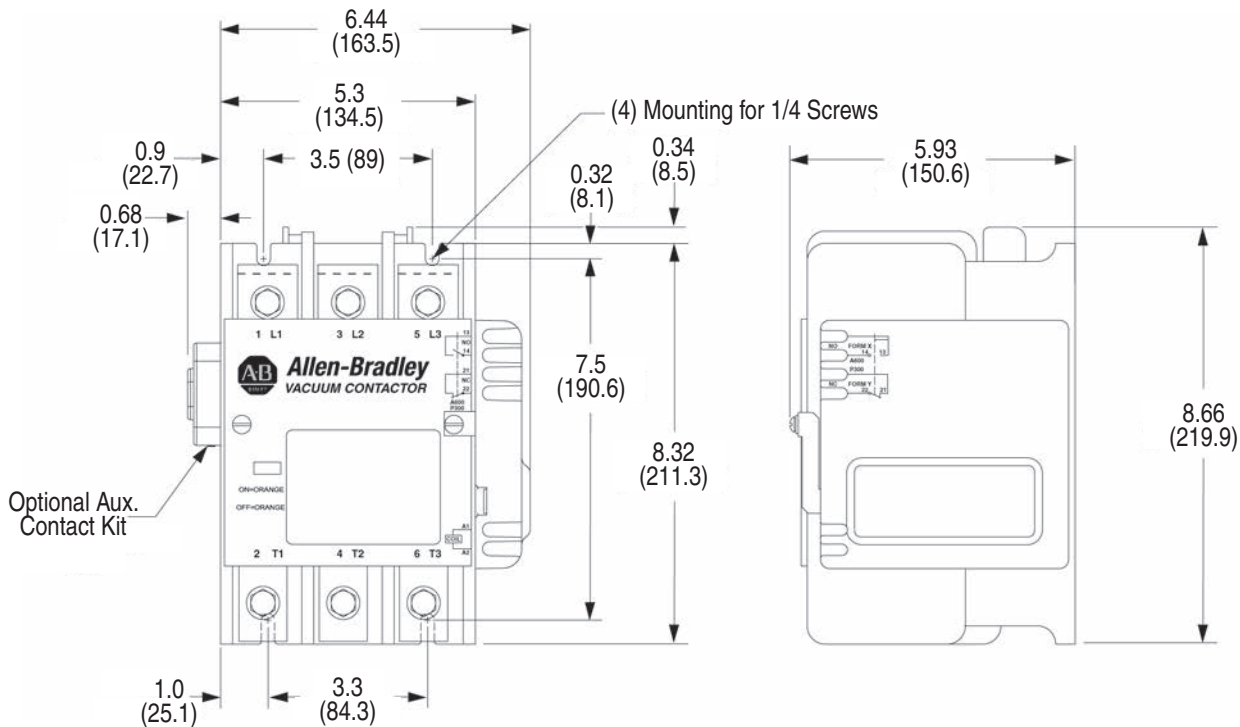
You can view or download publications at <http://www.rockwellautomation.com/literature/>. To order paper copies of technical documentation, contact your local Allen-Bradley distributor or Rockwell Automation sales representative.



	200 A	400 A	600 A
Standards	UL 508 CSA 22.2 1500V	UL 508 CSA 22.2 1500V	UL 508 CSA 22.2 1500V
Power Ratings			
Insul. & Operating Voltage	200...1500V	200...1500V	200...1500V
Rated Frequency	50...400 Hz	50...400 Hz	50...400 Hz
Making Current Capacity	1600 A	3200 A	4800 A
Breaking Current Capacity	1600 A	3200 A	4800 A
Dielectric Strength	6Kv - 1 Min. Interrupter GAP	6Kv - 1 Min. Interrupter GAP	6Kv - 1 Min. Interrupter GAP
Interrupting Current (Max.)	2.2 kA	4.6 kA	6 kA
Short Circuit Withstand (Max.)	10 kA symmetrical amps @ 1500V AC	18 kA symmetrical amps @ 1500V AC	30 kA symmetrical amps @ 1500V AC
Mechanical Life	1 200 000	1 000 000	750 000
Elect. Life AC3 Duty	500 000	500 000	250 000
Switching Frequency (Mechanical)	1102C, 1109 600/hr (max.) 6 s (full cycle)	600/hr (max.) 6 s (full cycle)	600/hr (max.) 6 s (full cycle)
Withstand current for 3 sec [kA]	3.2	6.0	6.5
Chop Current Max.	0.9 A	0.9 A	0.9 A
Control Ratings			
Coil Voltage Operation	-15% +10%	-15% +10%	-15% +10%
Inrush Power VA	1200VA	1100VA	1600VA
Sealed Power VA	12VA	12VA	14VA
Opening Time [ms]	120	160	160
Closing Time [ms]	20...40	20...40	30...40
Pick-Up Voltage	80% Cold 85% Hot	80% Cold 85% Hot	80% Cold 85% Hot
Drop-Out Voltage	70% or less	70% or less	70% or less
Application Ratings			
Mounting Installation	All planes	All planes	All planes
Altitude	6600 ft (2000 m)	6600 ft (2000 m)	6600 ft (2000 m)
Ambient Storage	-65...+160 °F (-54...71 °C)	-65...+160 °F (-54...71 °C)	-65...+160 °F (-54...71 °C)
Operating Temperature	-40...+135 °F (-40...57 °C)	-40...+135 °F (-40...57 °C)	-40...+135 °F (-40...57 °C)
Vibration/Shock	40 Hz: 2 G/30 G	40 Hz: 2 G/30 G	40 Hz: 2 G/30 G

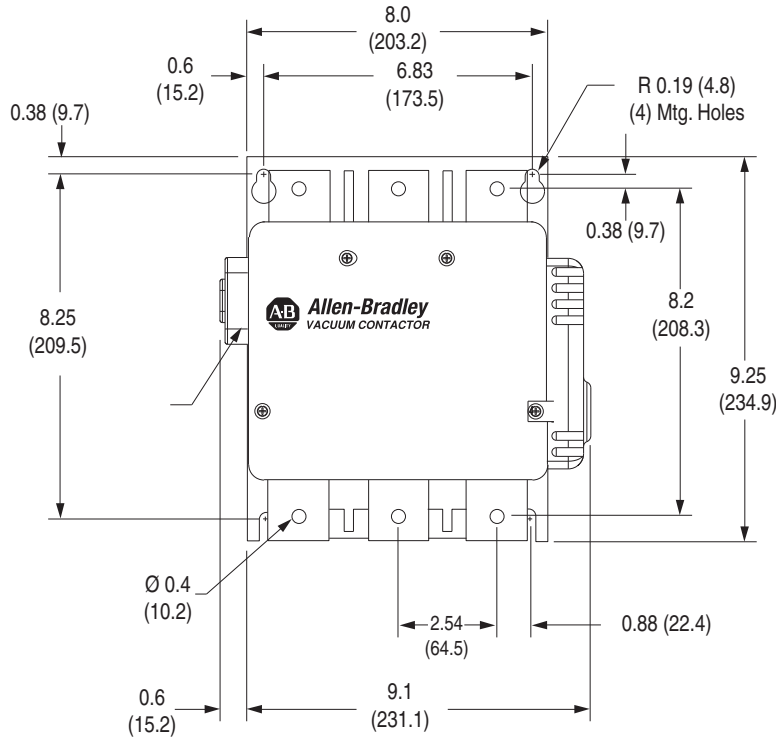
Dimensions are shown in inches (millimeters). Dimensions are not intended to be used for manufacturing purposes.

Bulletin 1102C (200 A)

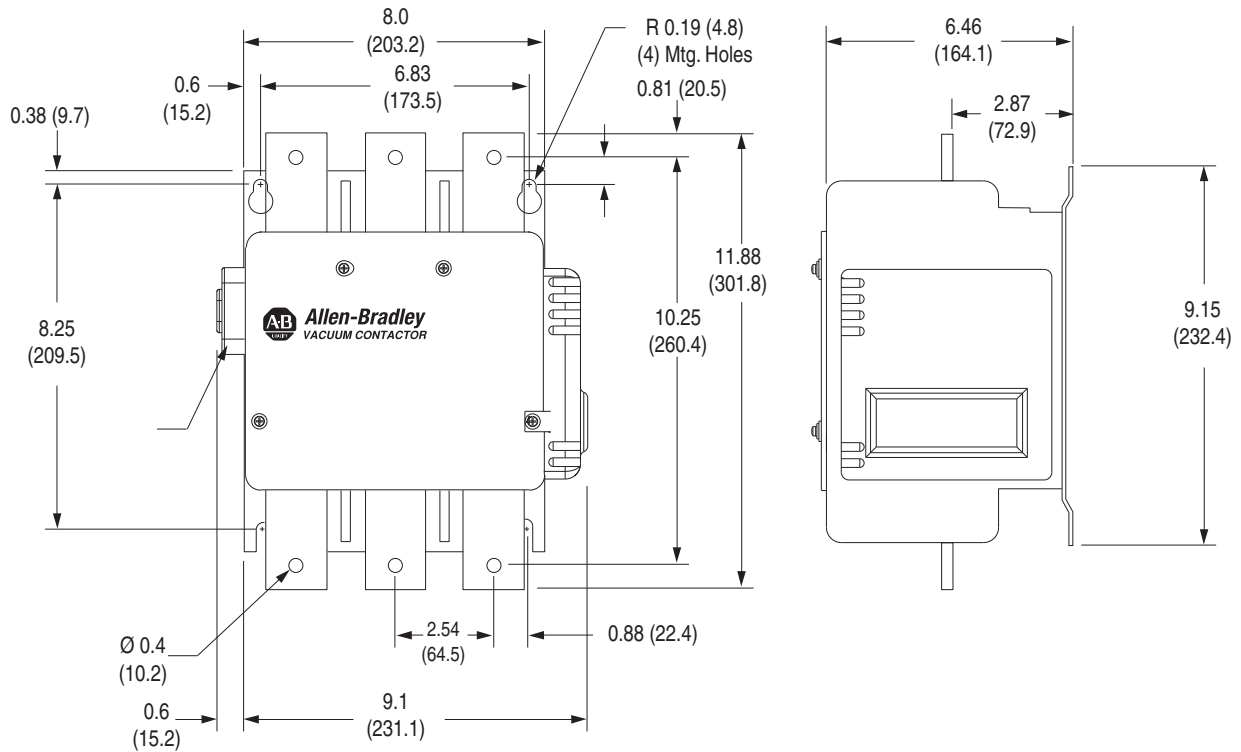


Dimensions are shown in inches (millimeters). Dimensions are not intended to be used for manufacturing purposes.

Bulletin 1102C (400 A and 600 A)



400 A



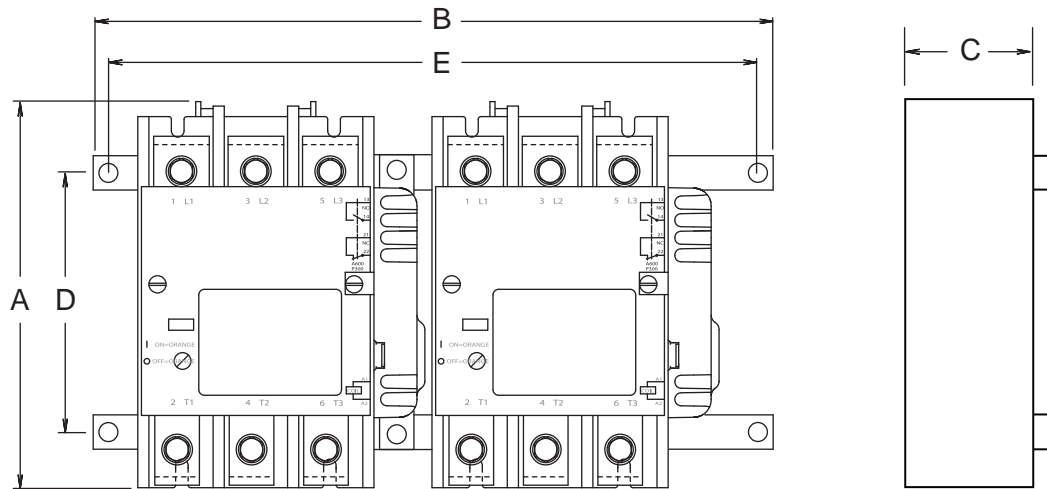
600 A

Approximate Dimensions

1104C Reversing Vacuum Contactor

Dimensions are shown in inches (millimeters). Dimensions are not intended to be used for manufacturing purposes.

[Bulletin 1104C \(200, 400, 600 A\)](#)

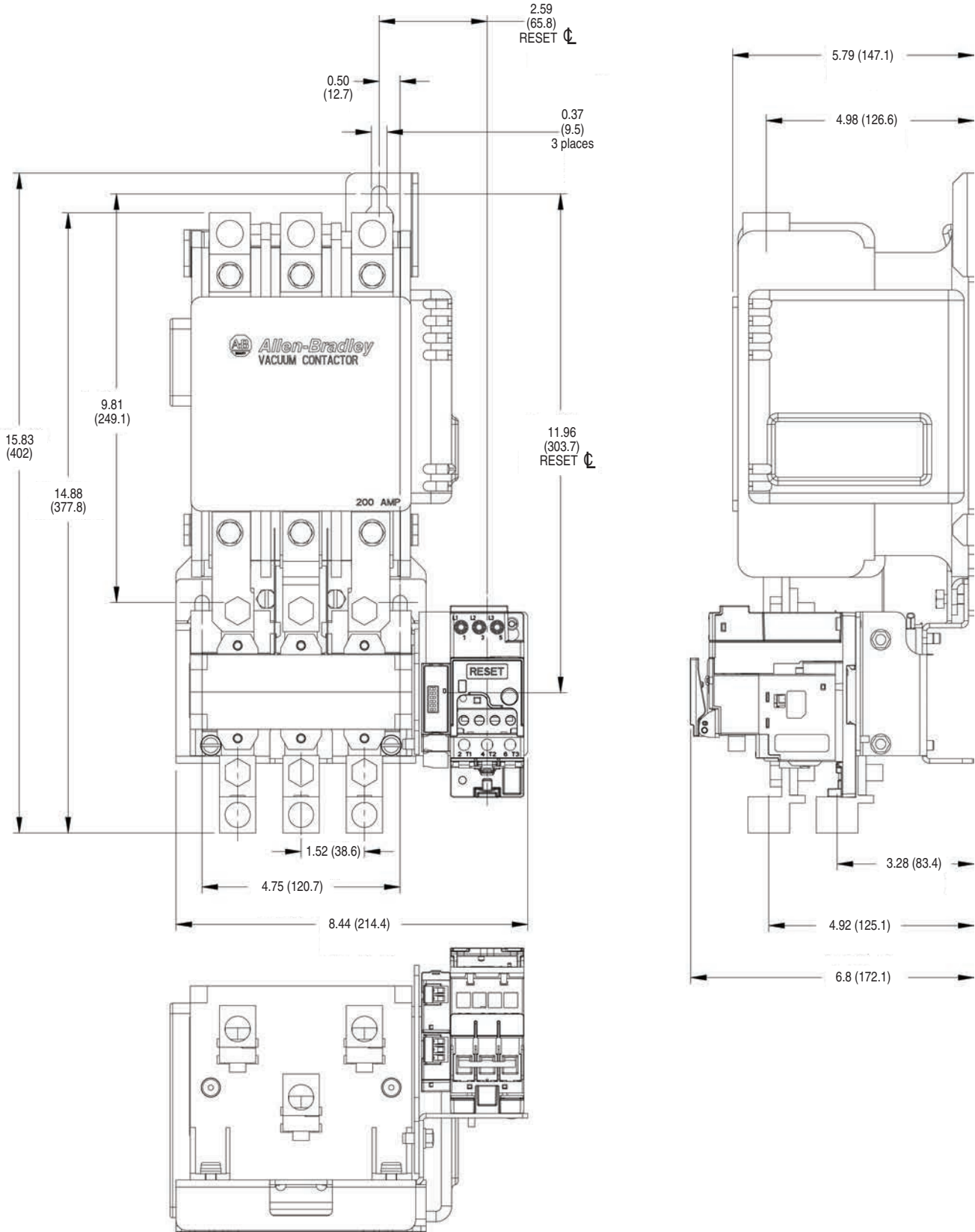


Contactor Size [A]	A Height	B Width	C Depth	D Mounting Height	E Mounting Width
200	8.375 (213)	14 (358)	6.5 (202)	7 (210)	13 (322)
400	9.25 (235)	21 (533)	7.10 (232)	7.85 (272)	19.5 (495)
600	12 (305)	21 (533)	7.10 (232)	10.82 (280)	19.5 (495)

Dimensions are shown in inches (millimeters). Dimensions are not intended to be used for manufacturing purposes.

Bulletin 1109 (200 A)

With E1 Plus Overload

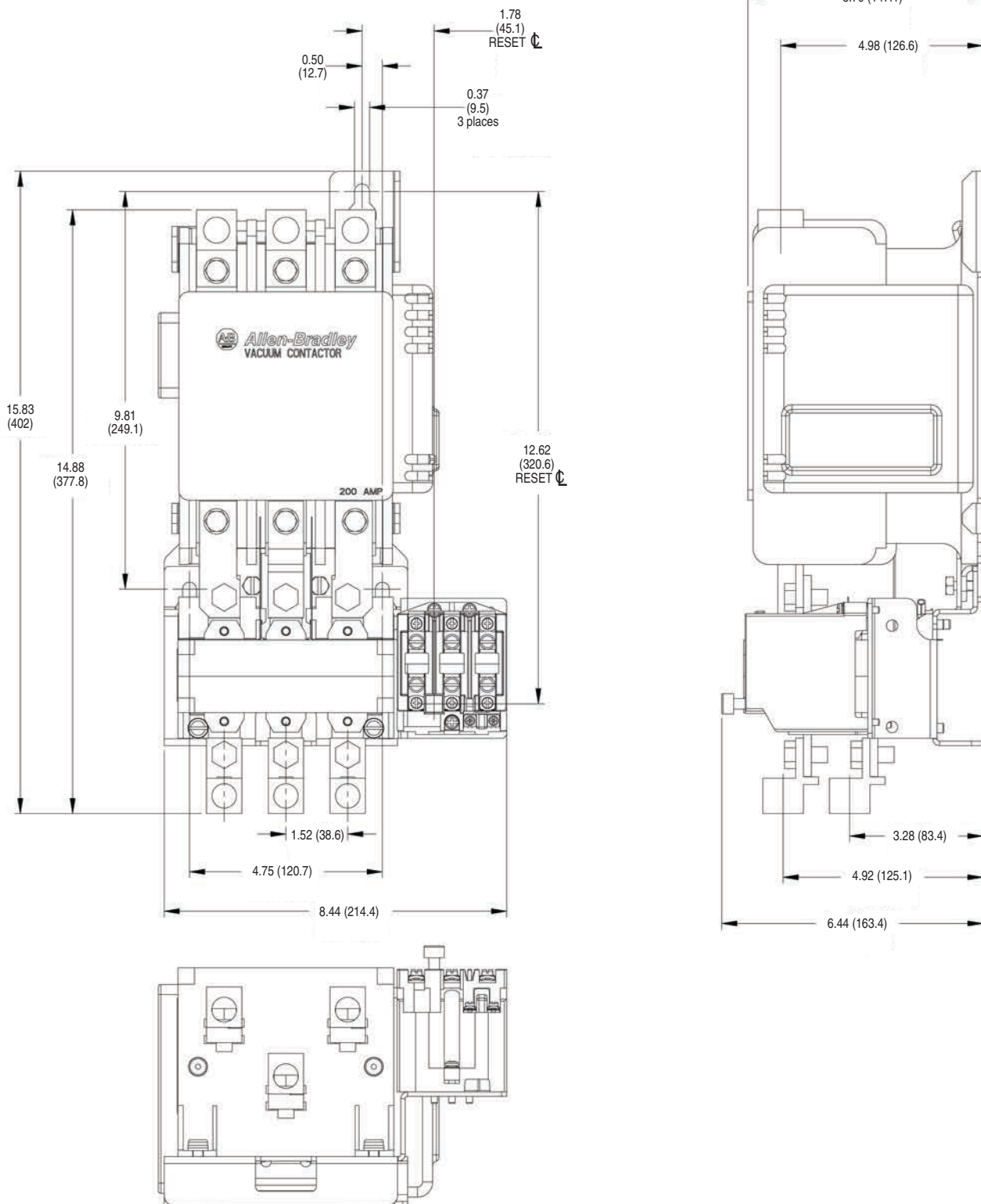


Approximate Dimensions

1109 Vacuum Starter

Dimensions are shown in inches (millimeters). Dimensions are not intended to be used for manufacturing purposes.

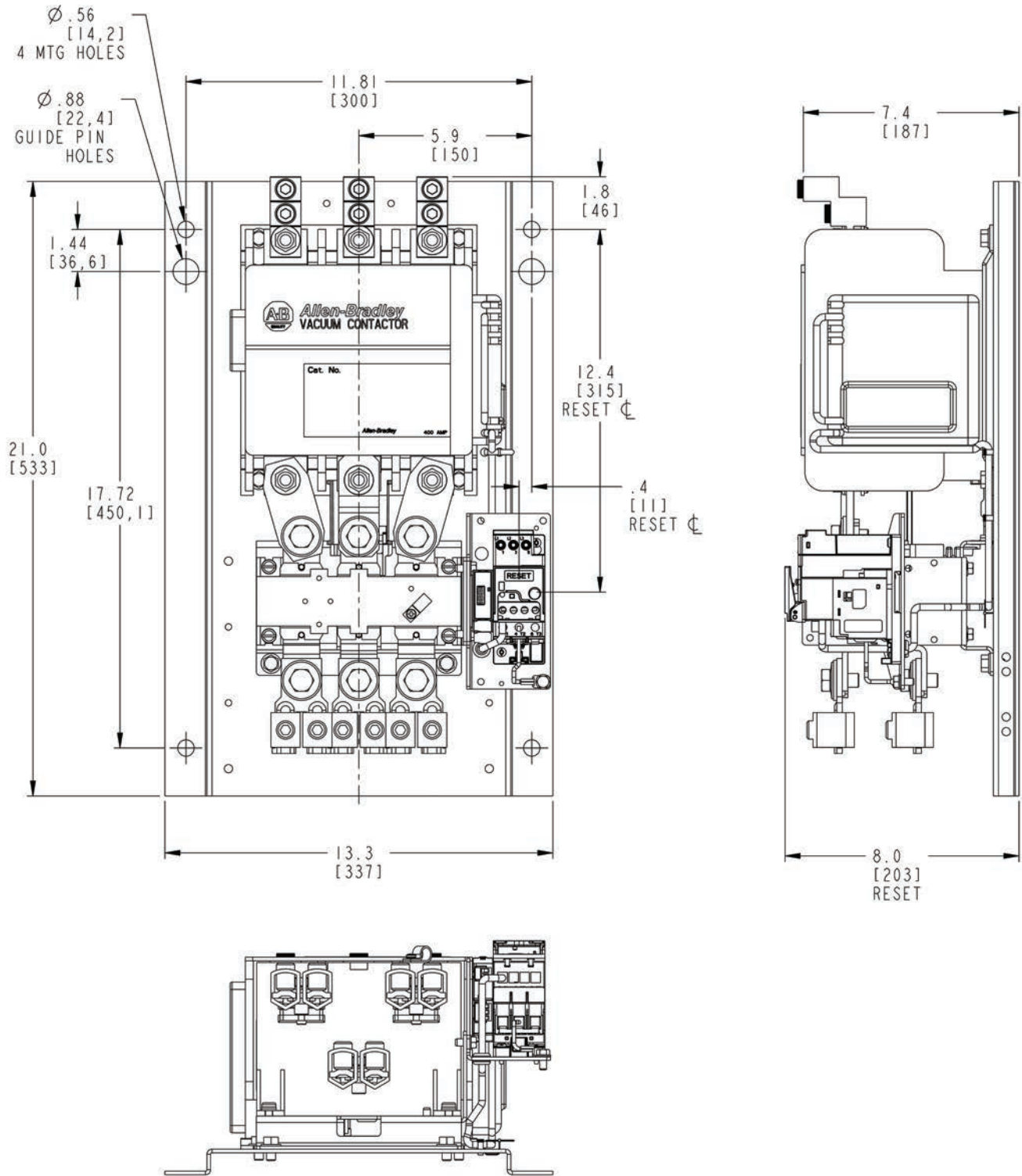
Bulletin 1109 (200 A), Continued With Eutectic Overload



Dimensions are shown in inches (millimeters). Dimensions are not intended to be used for manufacturing purposes.

Bulletin 1109 (400 A)

With E1 Plus Overload



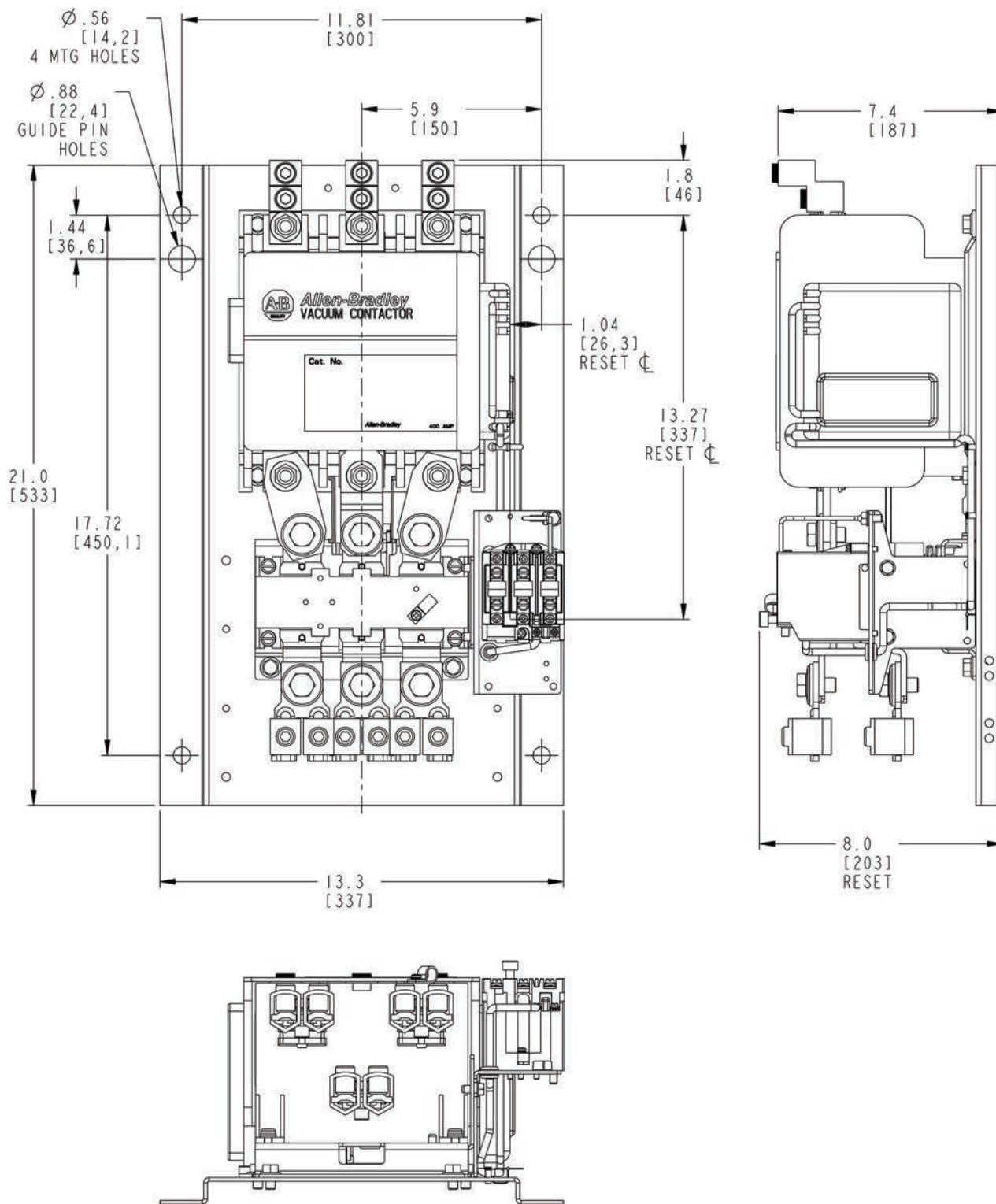
Approximate Dimensions

1109 Vacuum Starter

Dimensions are shown in inches (millimeters). Dimensions are not intended to be used for manufacturing purposes.

Bulletin 1109 (400 A), Continued

With Eutectic Overload



Dimensions are shown in inches (millimeters). Dimensions are not intended to be used for manufacturing purposes.

Bulletin 1109 (600 A)

With E1 Plus Overload

