



VE 2 stop gate



- Pneumatic stop gate
- Tilting stop gate; can be opened without causing wear on the workpiece pallet contact surface

[PDF](#) Assembly instructions

- Reversible operation not permitted

Product description

Stops one or more accumulating workpiece pallets at the defined stop surface of the workpiece pallet. When the pressure is released, the stop gate is closed by a spring and the workpiece pallet is stopped. Mounted inside the tracks, directly on the conveyor section.

Technical data

No.			0842900300
Max. total weight of workpiece pallet	m_G	kg	200
Operating temperature ¹⁾	T	°C	0 ... +60
Material specification			Housing: PA 6 Safety catch: Brass Lug cam: PA 66
Required compressed air connection	p	bar	4 ... 6
Pneumatic push-in fitting	∅	mm	4

1) High-temperature stop gate on request

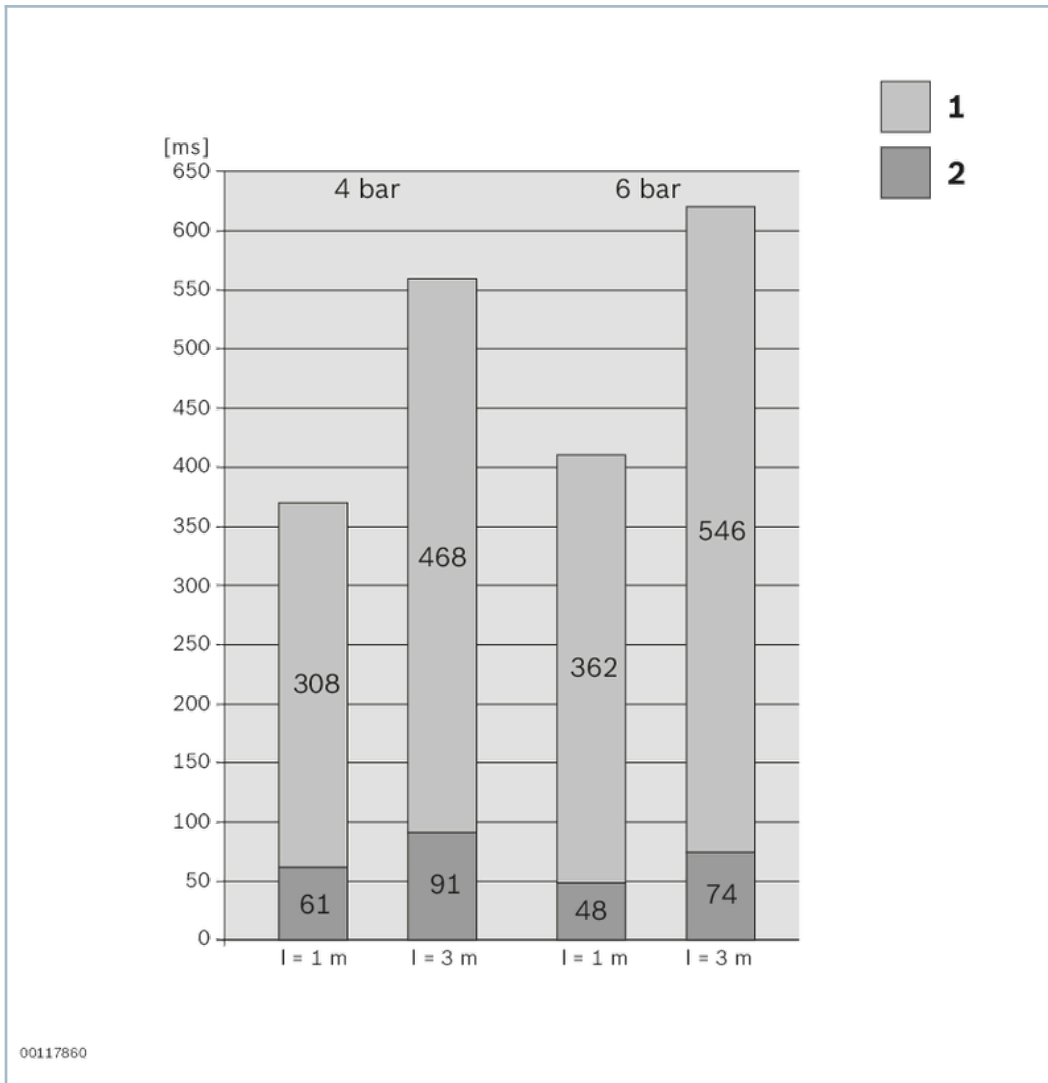
Permissible accumulation load

m_G	v_N
kg	m/min
200	6
140	9
100	12
70	15
50	18

Compressed air consumption of TS 2plus units

Diagrams/characteristic curves

Opening and shutting times



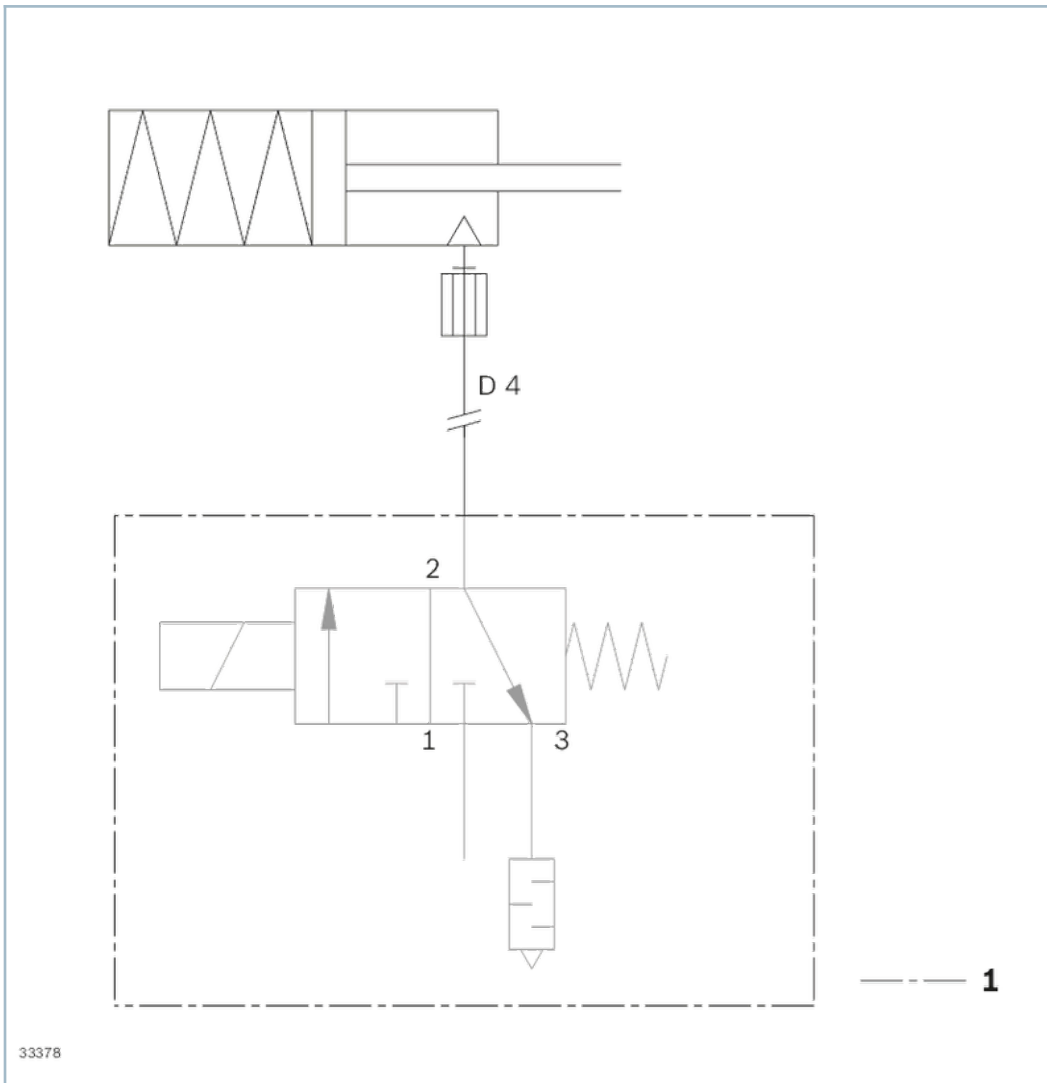
L = hose length

1 Close

2 Open at 4 bar

Symbols/Circuit diagrams

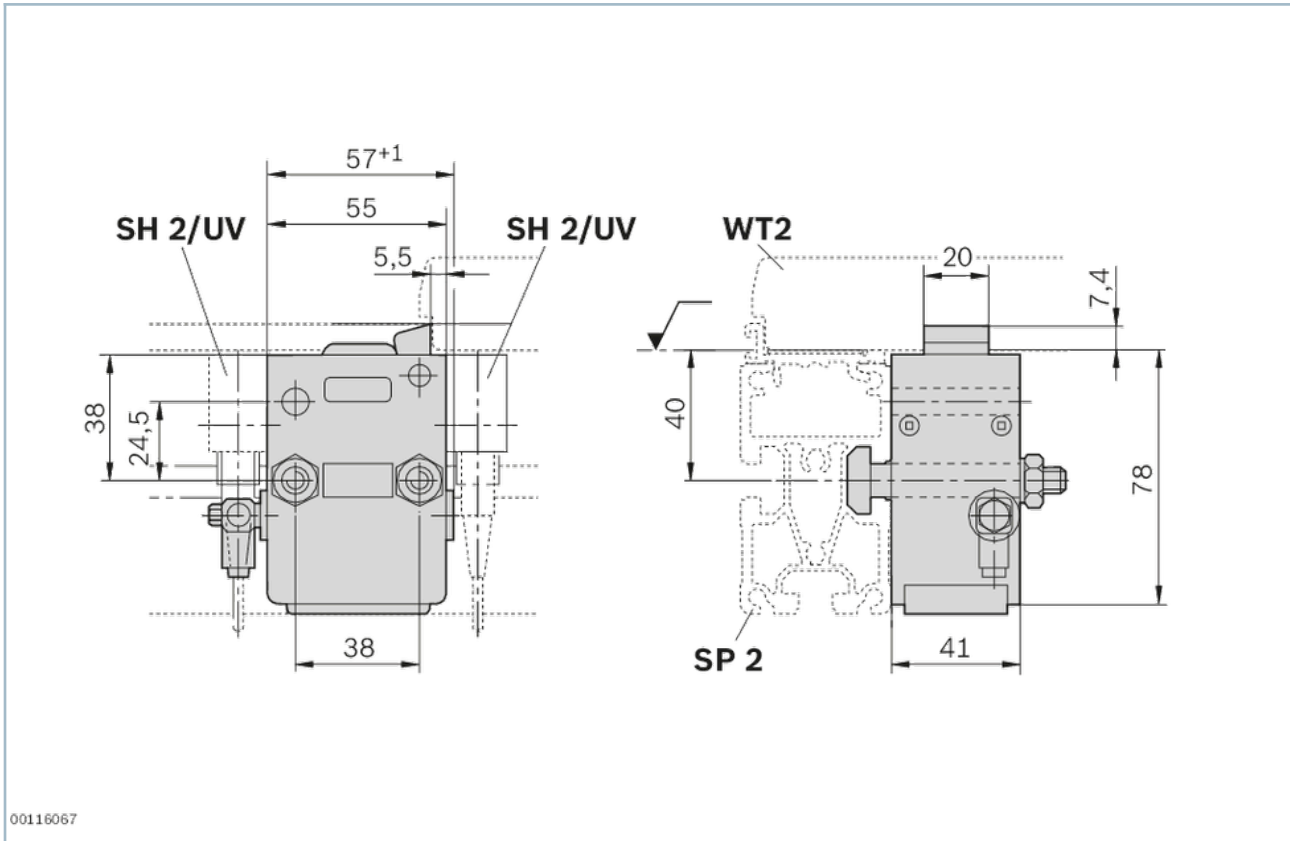
Circuit diagram



1 not included in the scope of delivery

Dimensions

VE 2 stop gate



Accessories



Switch Bracket



Stop gate position sensor

- For retrofitting on the VE 2, VE 2/M, VE 2/L and VE 2/S stop gates
 - Upper and lower position sensing possible, only suitable for upper position sensing with VE 2/S
-



VE 2/RS Return Stop

- Spring-loaded safety catch
 - Can be used on the left or right
-

Delivery notes

Condition of Delivery

Fully assembled

Scope of delivery

Incl. all fastening material to mount on ST 2/... conveyor section

Pneumatic elements

Ordering codes

	No.
VE 2 stop gate	0842900300