

Temperature controlled, indirectly  
and directly actuated diaphragm valves / seat valves  
Port size G 3/8 to G 1  
DN 10 to DN 50

- Continuous regulation
- High accuracy
- No auxiliary energy required



## Technical data

### Fluid:

For neutral liquid fluids (pH-value 5 to 9)

### Nominal diameter:

DN 10 to 50

### Mounting position:

Optional, preferably vertical

### Port size:

G 3/8 to G 2

### Operating pressure:

0 to 10 bar (temp. dep. direct)

0,8 to 10 bar (temp. dep. indirect)

### Regulating temperature:

0 to +150 °C

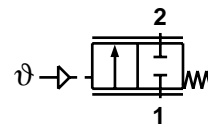
### Fluid temperature:

+1 to +80 °C

### Length of capillary tube:

1,5 m

Material:	Housing DN 10 + 15:	Brass
	Housing DN 20 to 50:	Gunmetal
	Seat seal:	NBR (Perbunan)
	Inner parts:	St. st. 1.4305



Switching function:  
Normally closed

## Options

Length of capillary tube 3 and 5 m  
Protection of capillary tube  
Electric signal transmitter  
Basic flow through bore hole



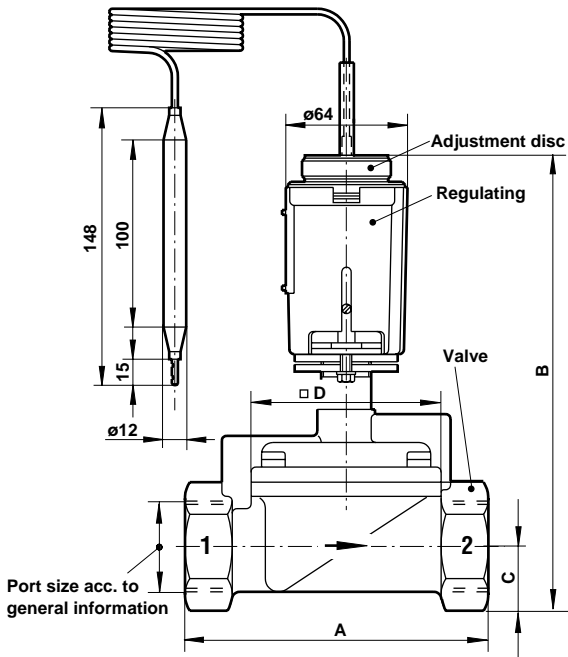
## General information

Symbol	Type	Port size	DN	Operating pressure (bar)		Regulating temperature difference between open and closed valve (K)		Regulating temperature, range in relation to opening point of valve (°C)		Sensor temperature (°C)	Total weight (kg)	Dimensional drawing (No.)
				Min.	Max.	Lower range	Upper range	Min.	Max.			
	<b>Temperature depending directly controlled seat valves</b>											
	0167500	G 3/8	10	0	10	16	10	0	+30	55	1,2	M01
	0177500	G 3/8	10	0	10	20	12	+20	+60	120	1,2	M02
	0187500	G 3/8	10	0	10	30	15	+40	+100	140	1,2	M02
	0197500	G 3/8	10	0	10	30	15	+80	+150	180	1,2	M02
	0167600	G 1/2	10	0	10	16	10	0	+30	55	1,2	M01
	0177600	G 1/2	10	0	10	20	12	+20	+60	120	1,2	M02
	0187600	G 1/2	10	0	10	30	15	+40	+100	140	1,2	M02
	0197600	G 1/2	10	0	10	30	15	+80	+150	180	1,2	M02
	0167700	G 3/4	15	0	10	16	10	0	+30	55	1,8	M01
	0177700	G 3/4	15	0	10	20	12	+20	+60	120	1,8	M02
	0187700	G 3/4	15	0	10	30	15	+40	+100	140	1,8	M02
	0197700	G 3/4	15	0	10	30	15	+80	+150	180	1,8	M02
	0167800	G 1	15	0	10	16	10	0	+30	55	1,8	M01
	0177800	G 1	15	0	10	20	12	+20	+60	120	1,8	M02
	0187800	G 1	15	0	10	30	15	+40	+100	140	1,8	M02
0197800	G 1	15	0	10	30	15	+80	+150	180	1,8	M02	
	<b>Temperature depending indirectly controlled diaphragm valves</b>											
	0167300	G 3/8	10	0,8	10	10	6	0	+30	55	1,5	M03
	0177300	G 3/8	10	0,8	10	10	6	+20	+60	120	1,5	M04
	0187300	G 3/8	10	0,8	10	12	7	+40	+100	140	1,5	M04
	0197300	G 3/8	10	0,8	10	12	7	+80	+150	180	1,5	M04
	0167400	G 1/2	10	0,8	10	10	6	0	+30	55	1,5	M03
	0177400	G 1/2	10	0,8	10	10	6	+20	+60	120	1,5	M04
	0187400	G 1/2	10	0,8	10	12	7	+40	+100	140	1,5	M04
	0197400	G 1/2	10	0,8	10	12	7	+80	+150	180	1,5	M04
	0167900	G 3/4	20	0,8	10	10	6	0	+30	55	2,4	M05
	0177900	G 3/4	20	0,8	10	10	6	+20	+60	120	2,4	M06
	0187900	G 3/4	20	0,8	10	12	7	+40	+100	140	2,4	M06
	0197900	G 3/4	20	0,8	10	12	7	+80	+150	180	2,4	M06
	0168000	G 1	25	0,8	10	10	6	0	+30	55	2,4	M05
	0178000	G 1	25	0,8	10	10	6	+20	+60	120	2,4	M06
	0188000	G 1	25	0,8	10	12	7	+40	+100	140	2,4	M06
	0198000	G 1	25	0,8	10	12	7	+80	+150	180	2,4	M06
	0168100	G 1 1/4	32	0,8	10	10	6	0	+30	55	3,6	M05
	0178100	G 1 1/4	32	0,8	10	10	6	+20	+60	120	3,6	M06
	0188100	G 1 1/4	32	0,8	10	12	7	+40	+100	140	3,6	M06
	0198100	G 1 1/4	32	0,8	10	12	7	+80	+150	180	3,6	M06
	0168200	G 1 1/2	40	0,8	10	10	6	0	+30	55	3,3	M05
	0178200	G 1 1/2	40	0,8	10	10	6	+20	+60	120	3,3	M06
	0188200	G 1 1/2	40	0,8	10	12	7	+40	+100	140	3,3	M06
	0198200	G 1 1/2	40	0,8	10	12	7	+80	+150	180	3,3	M06
	0168300	G 2	50	0,8	10	10	6	0	+30	55	4,6	M05
	0178300	G 2	50	0,8	10	10	6	+20	+60	120	4,6	M06
	0188300	G 2	50	0,8	10	12	7	+40	+100	140	4,6	M06
0198300	G 2	50	0,8	10	12	7	+80	+150	180	4,6	M06	



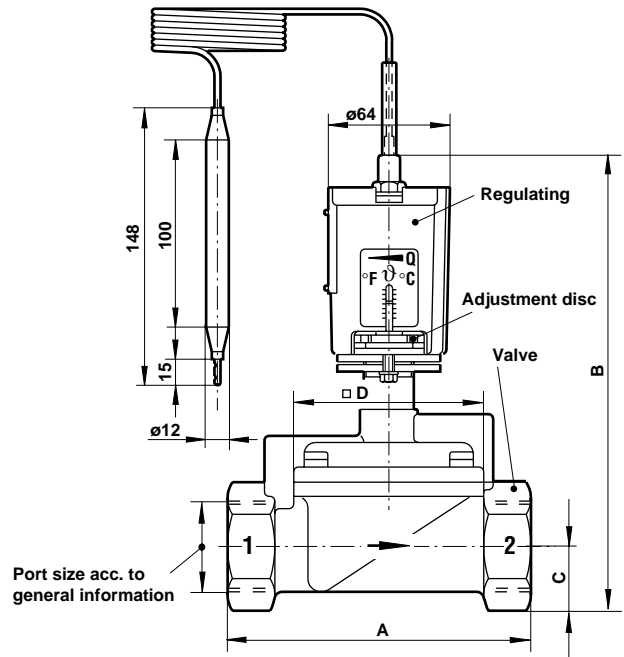
Dimensional drawings

M05



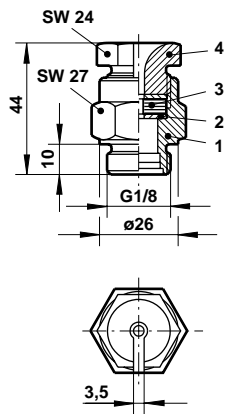
DN	A	B	C	D
20, 25	120	220	24	70
32, 40	158	243	33	96
50	178	263	40	112

M06

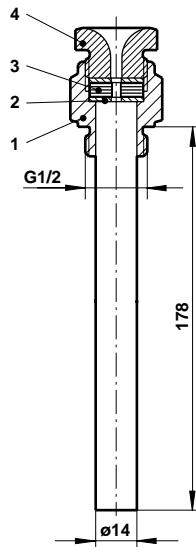


DN	A	B	C	D
20, 25	120	220	24	70
32, 40	158	243	33	96
50	178	263	40	112

Accessories



- 1 Threaded section
- 2 Disc
- 3 Seal
- 4 Threaded section



Union G 1/2  
(without protective tube up to max. 6 bar)  
Type **0574755**

Closed protective tube G 1/2 for sensor cartridge  
Type **0574758** (Brass)  
Type **0574760** (Stainless steel)  
(Plug, item 4, of brass)