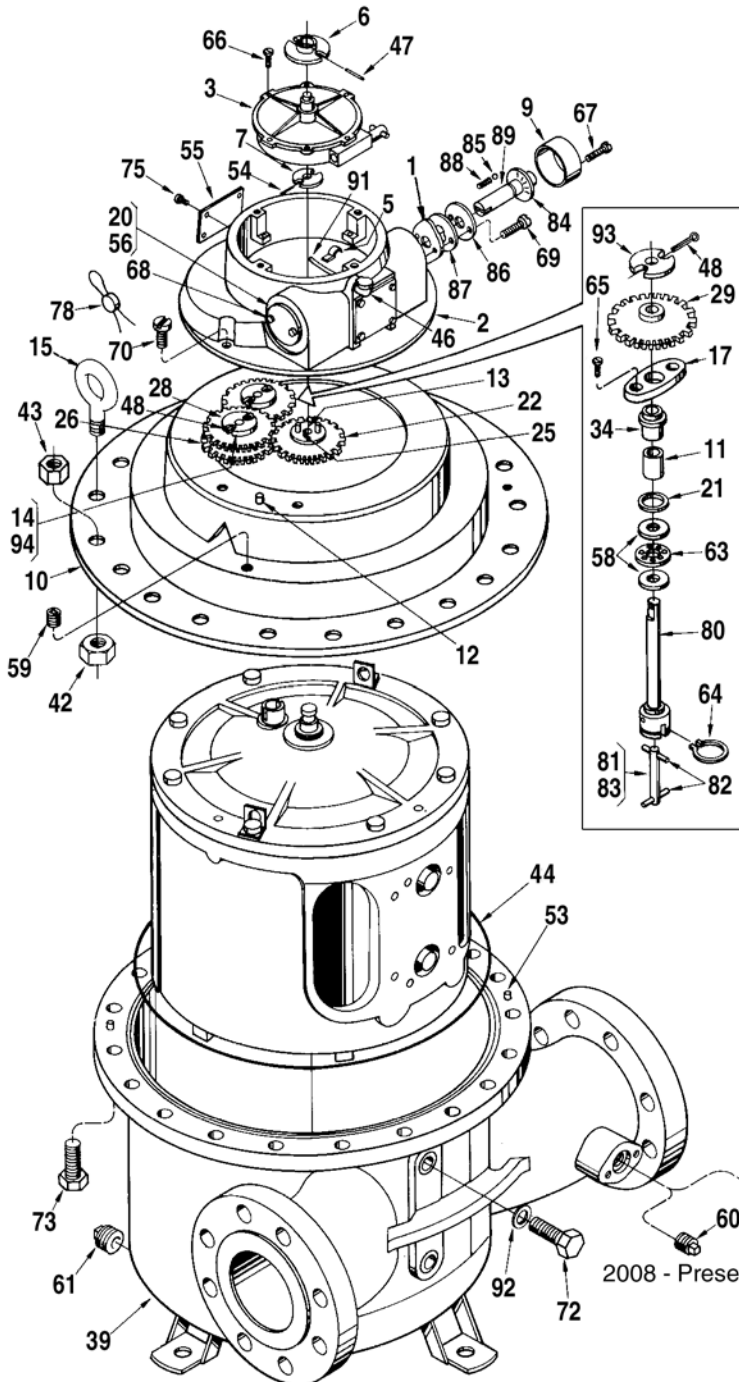
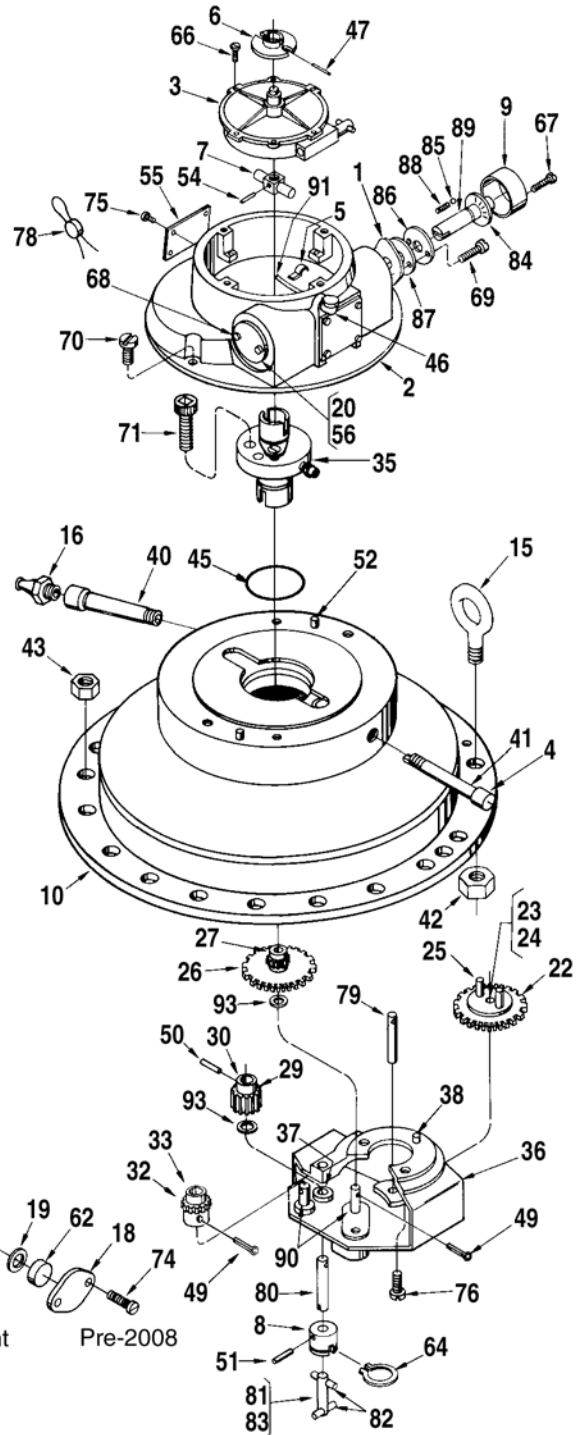


Smith Meter® PD Meter  
**Meter, PD Series,  
 F4-A1, S1**

**Pre – 2008  
 A1, S1**



**2008 – Present  
 S1**



2008 - Present

Pre-2008

<u>Item</u>	<u>Description</u>	<u>Qty.</u>	<u>Pre-2008</u>	<u>2008-Present</u>
	Imperial Gallons .....	1	008249-001	514767-001
	Imperial Gallons, LPG .....	1	008249-001	515070-001
	Dekalitres .....	1	008249-001	514767-001
	Dekalitres, LPG .....	1	008249-001	515070-001
30	Bushing, LPG Only .....	1	.....	504653-001
31	* Pin.....	2	001126-001	.....
32	@2 Gear, Reversing Pinion:			
	U.S. Barrels .....	1	.....	514361-001
	U.S. Barrels, LPG .....	1	.....	515067-001
33	Bushing, LPG Only .....	1	.....	504653-001
34	+ Gland, Packing:			
	Buna-N .....	1	518630-001	.....
	Viton .....	1	518630-002	.....
	PTFE <sup>1</sup> .....	1	009535-001	.....
	Brass.....	1	008934-001	.....
35	+@3 Gland, Packing:			
	Standard – Buna-N.....	1	.....	513644-001
	PTFE <sup>1</sup> .....	1	.....	513644-002
	NACE .....	1	.....	551178-001
36	Housing, Gear:			
	Standard and All Iron.....	1	.....	514628-001
	LPG .....	1	.....	514628-002
37	Bushing:			
	Standard and All Iron.....	1	.....	519882-001
	LPG .....	1	.....	514835-001
38	Dowel.....	1	.....	003628-001
39	Housing, Outer:			
	*@5 A1 – Standard (Reman Only) .....	1	Consult Factory	Consult Factory
	S1 – NACE .....	1	552982-001	552982-001
	S1 – PTFE <sup>1</sup> .....	1	552982-099	552982-099
40	Lubrication Assembly .....	1	.....	514659-001
41	Nipple:			
	Standard.....	1	.....	641111-404
	NACE .....	1	.....	645185-401
42	Nut, Eyebolt .....	2	006399-002	006399-002
43	Nut, Hex (9/16" - 12).....	20	642138-401	642138-401
44	+ O-Ring, Cover:			
	Buna-N .....	1	512140-001	512140-001
	Viton .....	1	512140-002	512140-002
	PTFE <sup>1</sup> .....	1	645842-401	645842-401
45	+ O-Ring, Packing Gland:			
	Buna-N .....	1	.....	640173-023
	Viton .....	1	.....	640894-403
	PTFE <sup>1</sup> .....	1	.....	645905-402
46	Oiler .....	1	006588-001	006588-001
47	Pin, Counter Drive Coupling .....	1	006028-002	006028-002
48	Pin, Cotter (1/16 x 5/8").....	2	641042-401	.....
49	Pin, Cotter (1/16 x 3/8").....	2	.....	009825-400
50	Pin, Groove (1/16 x 1/2").....	1	.....	006054-002
51	Pin, Groove (5/64 x 5/8").....	1	.....	009593-400
52	Pin, Groove (3/16 x 3/8").....	2	.....	641007-401
53	Pin, Groove, Outer Cover .....	2	640985-401	640985-401
54	Pin, Input Coupling.....	1	006053-002	006317-002
55	Plate, Caution .....	1	006571-003	006571-003
56	Plate, Cover .....	1	003440-001	003440-001
57	* Plate, Gland Lubrication.....	1	.....	517715-001
58	+ Plate, Thrust Bearing:			
	Standard and All Iron.....	2	001111-001	.....
	LPG .....	1	504720-001	.....

<sup>1</sup> Polytetrafluoroethylene (PTFE).

		Inner Mechanism		
Item	Description	Qty.	Part Number	
95	+@4 Block:			
	Standard.....	1	517085-001	
	High Viscosity:			
	For 2,000 SSU to 10,000 SSU.....	1	517085-041	
96	Body.....	1	511997-001	
97	+ Bushing, Jackshaft:			
	Standard and All Iron.....	2	519882-001	
	LPG.....	2	512796-001	
98	+ Coupling, Drive.....	1	512064-002	
99	Cover, Inner (Includes Item #100):			
	Standard and All Iron.....	1	516456-001	
	LPG.....	1	516456-002	
100	Cover, Pitot.....	1	512719-001	
101	Dowel, Locating Arm.....	1	512115-001	
102	Lug, Lift.....	2	512002-001	
103	Nut, Pitot Assembly, #10-32 Hex.....	2	001723-400	
104	Nut, 5/16-18 Shakeproof.....	1	009552-400	
105	Pin, Groove, 3/16 x 3/4".....	1	007900-400	
106	Pin, Groove, 5/64 x 5/8".....	1	009593-400	
107	Pitot.....	1	072186-001	
108	Plate.....	1	512714-001	
109	Ring, Retaining.....	1	064150-001	
110	@4 Rotor and Blade Assembly:			
	Previous Design (Prior to 1973):			
	Standard.....	1	515706-001	
	All Iron.....	1	515706-002	
	Current Design (1973 to present):			
	Standard.....	1	517231-001	
	All Iron.....	1	517231-002	
	LPG.....	1	517231-003	
111	Arm, Locating.....	1	511945-001	
112	+ Bearing, Rotor:			
	Standard and All Iron.....	2	516109-001	
	LPG.....	2	516109-002	
113	+ Bearing, Thrust:			
	Standard and All Iron.....	1	006519-001	
	LPG.....	1	504658-001	
114	+ Blade, Lower:			
	Standard.....	1	008901-001	
	All Iron.....	1	009441-042	
	LPG.....	1	504662-001	
	Standard – Modified for 2,000 SSU to 10,000 SSU.....	1	008901-041	
	Standard – Modified for 200°F Max.....	1	008901-042	
	Standard – Modified for 2,000 SSU to 10,000 SSU and 200°F Max.....	1	008901-043	
	A.I. – Modified for 2,000 SSU to 10,000 SSU.....	1	009441-041	
115	Pin, Blade Roller.....	2	003449-001	
116	Pin, Cotter, 3/32 x 1".....	2	006308-001	
117	+ Roller, Blade:			
	Standard and All Iron.....	2	065109-001	
	LPG.....	2	644412-402	
118	+ Blade, Upper:			
	Standard.....	1	008900-001	
	All Iron.....	1	009441-042	
	LPG.....	1	504663-001	
	Standard – Modified for 2,000 SSU to 10,000 SSU.....	1	008900-041	
	Standard – Modified for 200°F Max.....	1	008900-042	
	Standard – Modified for 2,000 SSU to 10,000 SSU and 200°F Max.....	1	008900-043	