

Electrically operated
Direct-acting 3-way
Polyprop (PP) solenoid valve
BURKERT 0330



Burkert 0330

Burkert 0330, Burkert 0124, Electrically operated direct-acting 3/2-way polyprop (PP) solenoid valve.

SIZE

DN2,0 to DN5,0 (1/4")

CONNECTION

- 2-Sided female thread according to ISO 228
- 3-Sided female thread according to ISO 228

NOMINAL PRESSURE

Maximum 16bar

TEMPERATURE FLUID

From:

0° to +80°C (NBR)

0° to +80°C (FPM)

-30° to +80°C (EPDM)

MATERIALS

Body: Polyprop (PP)

Seal: FPM or EPDM

Internal parts: Polyprop (PP)

FLOW DIRECTION

C: 3/2 way direct-acting solenoid valve, normally closed

D: 3/2 way direct-acting solenoid valve, normally open

F: 3/2 way direct-acting solenoid valve, mixing function

F: 3/2 way direct-acting solenoid valve, distribution function

T: 3/2 way direct-acting solenoid valve, flow direction optional

MOUNTING POSITION

Solenoid valve can be mounted in any position, preferably mounting with the coil pointing vertically upwards.

MEDIUM

Aggressive gases and liquids. For applications with aggressive media consult resistance table.

SOME ADVANTAGES

Direct acting, total isolation solenoid valve: the actuator is totally isolated from the fluid so that the wetted parts are just the body and the diaphragm.

VOLTAGE TOLERANCE

+ 10% / -10%

DUTY CYCLE

100% ED

AMBIENT TEMPERATURE

max. + 55 ° C

ELECTRICAL CONNECTION

Plug DIN 43650 for DIN A plugs

ELECTRIC PROTECTION

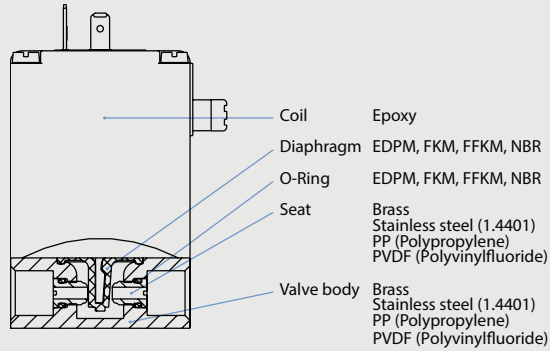
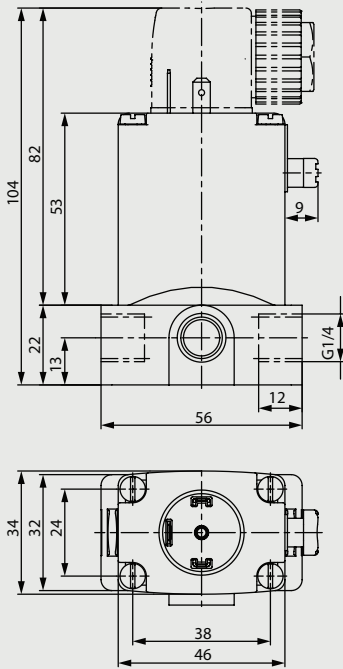
With plug Type 2508 / HST30 IP65

TECHNICAL SPECIFICATIONS

- Maximum allowable pressure: 16 bar
- Opening time: AC DN2-4mm 8-15ms, DC DN2-5mm 10-20ms.
- Closing time: AC DN2-4mm 8-15ms, DC DN2-4mm 10-20ms.
- Maximum viscosity: 5 ° E (~37 cStokes or mm²/ s)

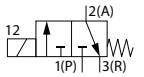
**Electrically operated
Direct-acting 3-way
Polyprop (PP) solenoid valve**

BURKERT 0330



3/2 NC, FPM, 024V/DC

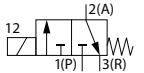
Burkert 0330 C 3/2 way direct acting solenoid valve electrically operated NC (normally closed) 24 volt DC



Nominal[mm] connection[mm]		Press. (min)	Press. (max) Gas	Press. (max) Liquid	Kv [m3/h]	Coil	Consump- tion	Dimension [mm] and weight [kg]				Order Code
DN	Rp							Length	Width	Height	Weight	
2,0	G1/4	0	12	12	0,13		8W	56	34	104	0,400	00054476
3,0	G1/4	0	8	8	0,25		8W	56	34	104	0,400	00023824
4,0	G1/4	0	4	4	0,30		8W	56	34	104	0,400	00062696
5,0	G1/4	0	3	3	0,40		8W	56	34	104	0,400	00272545

3/2 NC, FPM, 024V/50Hz

Burkert 0330 C 3/2 way direct acting solenoid valve electrically operated NC (normally closed) 24 volt AC



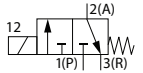
Nominal[mm] connection[mm]		Press. (min)	Press. (max) Gas	Press. (max) Liquid	Kv [m3/h]	Coil	Consump- tion	Dimension [mm] and weight [kg]				Order Code
DN	Rp							Length	Width	Height	Weight	
3,0	G1/4	0	10	10	0,25		20-11VA	56	34	104	0,400	00041689
4,0	G1/4	0	5	5	0,30		20-11VA	56	34	104	0,400	00088420

**Electrically operated
Direct-acting 3-way
Polyprop (PP) solenoid valve**

BURKERT 0330

3/2 NC, FPM, 230V/50Hz

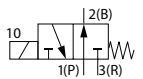
Burkert 0330 C 3/2 way direct acting solenoid valve electrically operated NC (normally closed) 230 volt AC



Nominal[mm] connection[mm]		Press. (min)	Press. (max) Gas	Press. (max) Liquid	Kv [m3/h]	Coil	Consump- tion	Dimension [mm] and weight [kg]				Order Code
DN	Rp							Length	Width	Height	Weight	
3,0	G1/4	0	10	10	0,18		20-11VA	56	34	104	0,400	00132884
4,0	G1/4	0	5	5	0,23		20-11VA	56	34	104	0,400	00059636

3/2 NO, FPM, 024V/DC

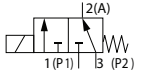
Burkert 0330 D 3/2 way direct acting solenoid valve electrically operated NO (normally open) 24 volt DC



Nominal[mm] connection[mm]		Press. (min)	Press. (max) Gas	Press. (max) Liquid	Kv [m3/h]	Coil	Consump- tion	Dimension [mm] and weight [kg]				Order Code
DN	Rp							Length	Width	Height	Weight	
2,0	G1/4	0	12	12	0,13		8W	56	34	104	0,400	00017102
4,0	G1/4	0	4	4	0,30		8W	56	34	104	0,400	00067620

3/2 Mixing Function, FPM, 024V/DC

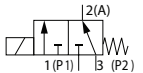
Burkert 0330 E 3/2 way direct acting solenoid valve electrically operated E (mixing) 24 volt DC.



Nominal[mm] connection[mm]		Press. (min)	Press. (max) Gas	Press. (max) Liquid	Kv [m3/h]	Coil	Consump- tion	Dimension [mm] and weight [kg]				Order Code
DN	Rp							Length	Width	Height	Weight	
3,0	G1/4	0	4	4	0,25		8W	56	34	104	0,400	00069917
4,0	G1/4	0	2	2	0,30		8W	56	34	104	0,400	00061077

3/2 Mixing Function, FPM, 024V/50Hz

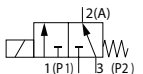
Burkert 0330 E 3/2 way direct acting solenoid valve electrically operated E (mixing) 24 volt AC.



Nominal[mm] connection[mm]		Press. (min)	Press. (max) Gas	Press. (max) Liquid	Kv [m3/h]	Coil	Consump- tion	Dimension [mm] and weight [kg]				Order Code
DN	Rp							Length	Width	Height	Weight	
3,0	G1/4	0	6	6	0,25		20-11VA	56	34	104	0,400	00066230
4,0	G1/4	0	3	3	0,30		20-11VA	56	34	104	0,400	00086921

3/2 Mixing Function, FPM, 230V/50Hz

Burkert 0330 E 3/2 way direct acting solenoid valve electrically operated E (mixing) 230 volt AC.



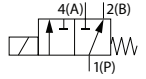
Nominal[mm] connection[mm]		Press. (min)	Press. (max) Gas	Press. (max) Liquid	Kv [m3/h]	Coil	Consump- tion	Dimension [mm] and weight [kg]				Order Code
DN	Rp							Length	Width	Height	Weight	
3,0	G1/4	0	6	6	0,25		20-11VA	56	34	104	0,400	00022294
4,0	G1/4	0	3	3	0,30		20-11VA	56	34	104	0,400	00053406

**Electrically operated
Direct-acting 3-way
Polyprop (PP) solenoid valve**

BURKERT 0330

3/2 Distribution Function, FPM, 024V/DC

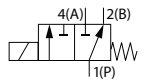
Burkert 0330 F 3/2 way direct acting solenoid valve electrically operated F (distribution) 24 volt DC.



Nominal[mm] connection[mm]		Press. (min)	Press. (max) Gas	Press. (max) Liquid	Kv [m3/h]	Coil	Consump- tion	Dimension [mm] and weight [kg]				Order Code
DN	Rp							Length	Width	Height	Weight	
3,0	G1/4	0	8	8	0,25		8W	56	34	104	0,400	00157376
4,0	G1/4	0	4	4	0,30		8W	56	34	104	0,400	00020528

3/2 Distribution Function, FPM, 024V/50Hz

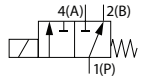
Burkert 0330 F 3/2 way direct acting solenoid valve electrically operated F (distribution) 24 volt AC.



Nominal[mm] connection[mm]		Press. (min)	Press. (max) Gas	Press. (max) Liquid	Kv [m3/h]	Coil	Consump- tion	Dimension [mm] and weight [kg]				Order Code
DN	Rp							Length	Width	Height	Weight	
4,0	G1/4	0	5	5	0,30		20-11VA	56	34	104	0,400	00043284

3/2 Distribution Function, FPM, 230V/50Hz

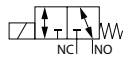
Burkert 0330 F 3/2 way direct acting solenoid valve electrically operated F (distribution) 230 volt AC.



Nominal[mm] connection[mm]		Press. (min)	Press. (max) Gas	Press. (max) Liquid	Kv [m3/h]	Coil	Consump- tion	Dimension [mm] and weight [kg]				Order Code
DN	Rp							Length	Width	Height	Weight	
4,0	G1/4	0	5	5	0,30		20-11VA	56	34	104	0,400	00045935

3/2 Universal, FPM, 024V/DC

Burkert 0330 T 3/2 way direct acting solenoid valve electrically operated US (universal) 24 volt DC.



Nominal[mm] connection[mm]		Press. (min)	Press. (max) Gas	Press. (max) Liquid	Kv [m3/h]	Coil	Consump- tion	Dimension [mm] and weight [kg]				Order Code
DN	Rp							Length	Width	Height	Weight	
2,0	G1/4	0	7	7	0,13		8W	56	34	104	0,400	00136313
3,0	G1/4	0	4	4	0,25		8W	56	34	104	0,400	00136319
4,0	G1/4	0	2	2	0,30		8W	56	34	104	0,400	00124927